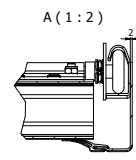
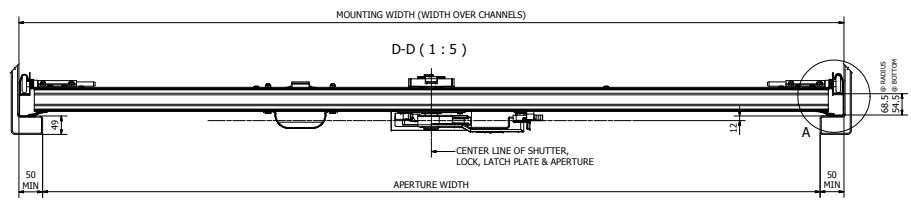
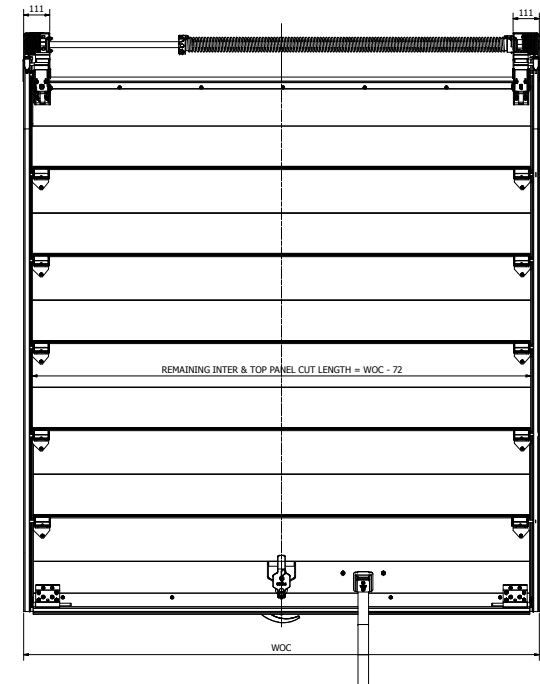
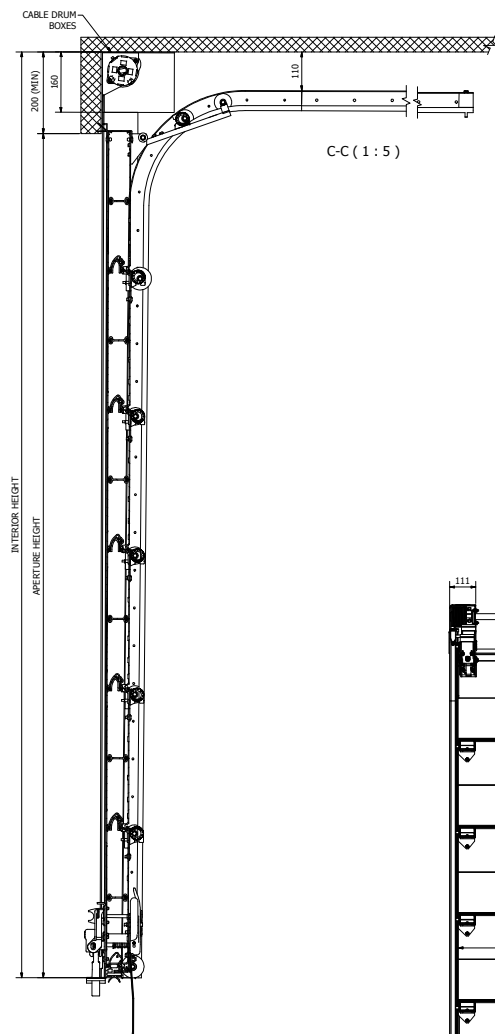
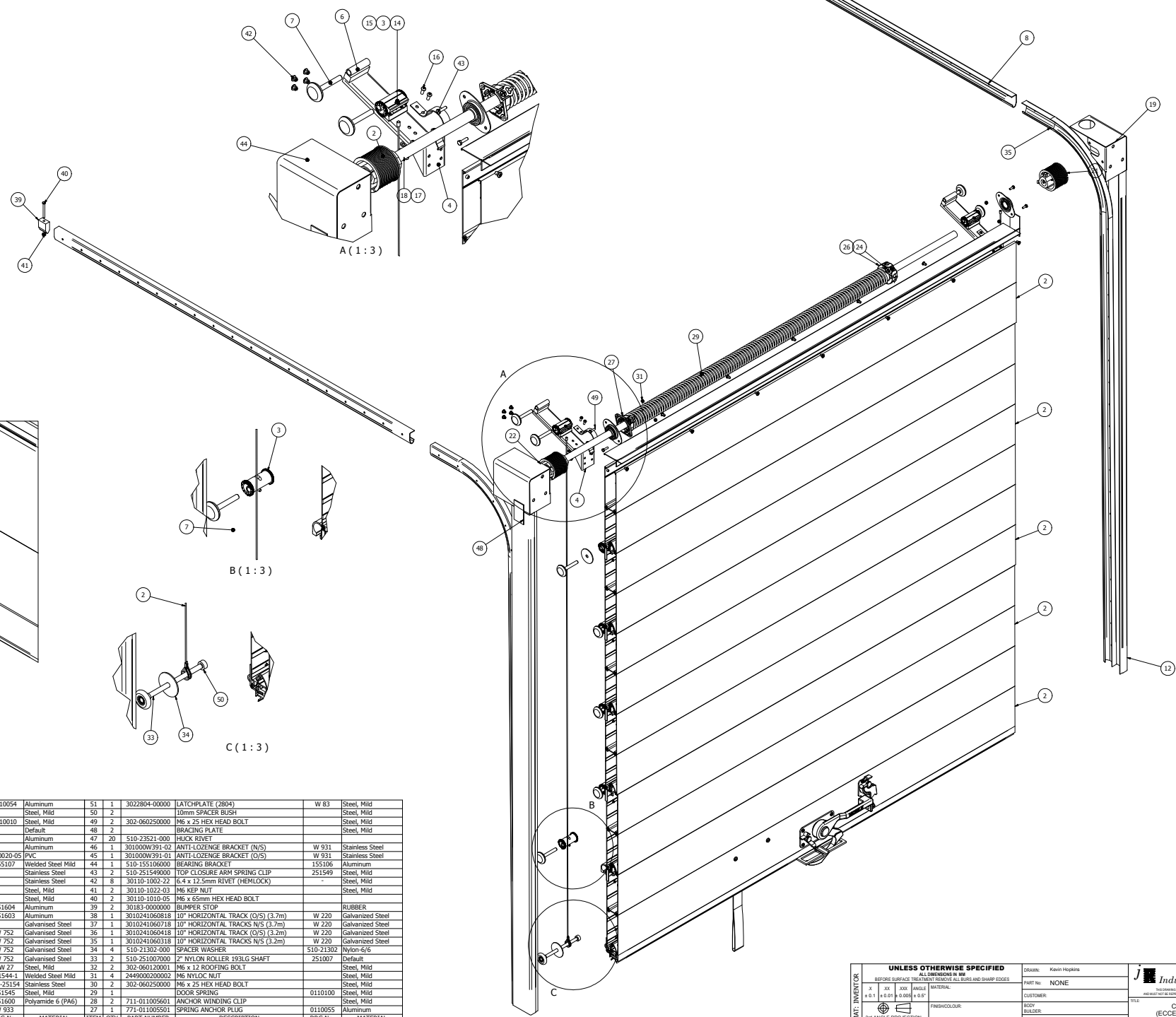


REVISION HISTORY			
REV	DESCRIPTION	DATE	DRAWN BY
1	FIRST ISSUE	11/07/2011	
2	REIN HEADS REVERSED	22/07/2017	KEVIN HOPKINS



UNLESS OTHERWISE SPECIFIED ALL DIMENSIONS IN MM BEFORE SURFACE TREATMENT REMOVE ALL BEERS AND SHARP EDGES		DRAWN: Kevin Hopkins PART No: NONE CUSTOMER: BODY: SUSSEX: PROJECT: COLDSAVER SCALE:	Industries Ltd COLDSAVER SHUTTER (ECCENTRIC ROLLER HOLDERS)
FORMAT: INVENTOR X ± 0.1 X ± 0.01 X ± 0.005 X ± 0.05 3/8 ANGLE PROJECTION IF IN DOUBT ASK! DO NOT SCALE	SIZE: 3000 ANGLE: 0° MATERIAL: FINISH COLOUR: TOTAL MASS: 140.21 kg	FINISH COLOUR: TOTAL MASS: 140.21 kg SCALE:	TITLE: COLD SAVER SHUTTER (ECCENTRIC ROLLER HOLDERS) DRAWING No: W 935 Sheet No: 1 of 2

REV	DESCRIPTION	DATE	APPROVED
1	ISSUE	11/07/2011	
2	HEADLINE REVERSED	25/07/2017	KEVIN HOPLINGS



ITEM QTY	PART NUMBER	DESCRIPTION	DRG No:	MATERIAL	ITEM QTY	PART NUMBER	DESCRIPTION	DRG No:	MATERIAL
26	1	771-011005401	SPRING WINDING PLUG	0110054	Aluminum	51	1	3022804-00000	LATCHPLATE (2804)
25	6	771-000162429	SQUARE HEAD SCREW 7/16" UNC X 1"		Steel, Mild	50	2		10mm SPACER BUSH
34	1	768-011001007	BALANCER SHAFT	0110010	Steel, Mild	49	2	302-060250000	M6 x 25 HEX HEAD BOLT
23	2	771-011007301	BEARING ASSEMBLY	Default	Steel, Mild	48	2		BRACKING PLATE
22	1	301-4128-0000	CABLE DRUM (N/S)		Aluminum	47	20	510-23521-000	HUCK RIVET
21	1	301-4127-0000	CABLE DRUM (O/S)		Aluminum	46	1	301000W391-02	ANTI-LOZENGES BRACKET (N/S)
20	2	771-021002005	SEAL SIDE & TOP	0210020-05	PVC	45	1	301000W391-01	ANTI-LOZENGES BRACKET (O/S)
19	1	510-155107000	BEARING BRACKET	155107	Welded Steel Mild	44	1	510-155106000	BEARING BRACKET
18	8	301920005SM6	M6 NYLOC NUT		Stainless Steel	43	2	510-251549000	TOP CLOSURE ARM SPRING CLIP
17	8	302-060160013	M6 FLAT WASHER		Stainless Steel	42	8	30110-1002-22	6.4 x 12.5mm RIVET (HEMLOCK)
16	8	769-000511020	M x 16 SKT HD SCREW		Steel, Mild	41	2	30110-1022-03	M6 KEP NUT
15	2	725-011008467	M6 x 30 CAP SCREW		Steel, Mild	40	2	30110-1010-05	M6 x 35mm HEX HEAD BOLT
14	2	510-251604000	ROLLER COVER	251604	Aluminum	39	2	30183-0000000	BUMPER STOP
13	2	510-251603000	ROLLER HOLDER BASE	251603	Aluminum	38	1	3010241060818	10" HORIZONTAL TRACK (O/S) (3.7m)
12	2	768-011009211	TRACK SUPPORT ANGLE		Galvanized Steel	37	1	3010241060718	10" HORIZONTAL TRACK (O/S) (3.7m)
11	1	3010241060310	TRACK- STANDARD 50mm (2") (3691mm)	W 752	Galvanized Steel	36	1	3010241060418	10" HORIZONTAL TRACK (O/S) (3.2m)
10	1	3010241060210	TRACK- STANDARD 50mm (2") (3191mm)	W 752	Galvanized Steel	35	1	3010241060318	10" HORIZONTAL TRACKS (N/S) (3.2m)
9	1	3010241060115	TRACK- STANDARD 50mm (2") (2091mm)	W 752	Galvanized Steel	34	4	510-21302-000	SPACER WASHER
8	2	3010241060110	TRACK- STANDARD 50mm (2") (1991mm)	W 752	Galvanized Steel	33	2	510-251007000	2" NYLON ROLLER 193LG SHAFT
7	14	3012996-10000	2" TRACK ROLLER	SW 27	Steel, Mild	32	2	302-060120001	M6 x 12 ROOFING BOLT
6	2	510-251544000	TOP CLOSURE ARM ASSEMBLY	251544-1	Welded Steel Mild	31	4	244000020000	M6 NYLOC NUT
5	2	510-251548000	TOP CLOSURE ARM AXLE PIN	510-25154	Stainless Steel	30	2	302-060250000	M6 x 25 HEX HEAD BOLT
4	2	510-251545000	TOP ROLLER HOLDER - BASE	251545	Steel, Mild	29	1	711-011005601	DOOR SPRING
3	12	510-251600000	PLASTIC ROLLER INSERT	251600	Polyamide 6 (PA6)	28	2	771-011005501	ANCHOR WINDING CLIP
2	8		GOLDSAVER INTERPANEL ASSEMBLY	W 933	Aluminum	27	1	771-011005501	SPRING ANCHOR PLUG

FORMAT: INVENTOR X Y Z 1000 INCHES ± 0.1 ± 0.01 ± 0.005 ± 0.01° 3RD ANGLE PROJECTION IF IN DOUBT ASK! DO NOT SCALE	UNLESS OTHERWISE SPECIFIED BEFORE SURFACE TREATMENT REMOVE ALL BURRS AND SHARP EDGES ALL DIMENSIONS IN MM FINISH COLOUR:		DRAWN: Kevin Hoplings PART No: NONE CUSTOMER:
	TOTAL MASS: 140.21 kg SCALE:		BODY: SUSSE: PROJECT: COLDSAVER SCALE:
	PROJECT: COLDSAVER SCALE:		TITLE: Industries Ltd COLDSAVER SHUTTER (ECCENTRIC ROLLER HOLDERS)
	DRAWING No: W 935 Sheet No: 2 of 2		PROJECT: COLDSAVER SCALE: